



evolution wireless G4 SR IEM G4 | Stereo Transmitter



Half-rack stereo transmitter in a full-metal housing with OLED display for full control delivering clarity along the whole frequency spectrum for daily use on stage with evolution wireless G4 In Ear Monitoring systems.

FEATURES

- Half-rack stereo transmitter in a full-metal housing with OLED display for full control
- Easy and flexible wireless synchronization between transmitter and receiver via infrared
- Compatible with Sennheiser WSM control software for flexible frequency allocation
- Up to 16 compatible channels
- Up to 42 MHz bandwidth with 1680 selectable frequencies, fully tunable in a stable UHF range
- Transmission Range: up to 100 meters / 300 feet
- High RF output power (up to 50 mW) depending on country regulations

DELIVERY INCLUDES

- SR IEM G4 stereo transmitter
- rod antenna
- power supply
- GA 3 rackmount set
- quick guide
- safety guide
- manufacturer declaration sheet

PRODUCT VARIANTS

Made in Germany

| | | |
|---------------------|---------------|-----------------|
| SR IEM G4-A1 | 470 - 516 MHz | Art. no. 507842 |
| SR IEM G4-A | 516 - 558 MHz | Art. no. 507843 |
| SR IEM G4-GB | 606 - 648 MHz | Art. no. 507844 |
| SR IEM G4-G | 566 - 608 MHz | Art. no. 507845 |
| SR IEM G4-B | 626 - 668 MHz | Art. no. 507846 |
| SR IEM G4-C | 734 - 776 MHz | Art. no. 507847 |
| SR IEM G4-E | 823 - 865 MHz | Art. no. 507848 |

Assembled in USA

| | | |
|---------------------|---------------|-----------------|
| SR IEM G4-A1 | 470 - 516 MHz | Art. no. 508181 |
| SR IEM G4-A | 516 - 558 MHz | Art. no. 508182 |
| SR IEM G4-AS | 520 - 558 MHz | Art. no. 508183 |
| SR IEM G4-G | 566 - 608 MHz | Art. no. 508184 |
| SR IEM G4-B | 626 - 668 MHz | Art. no. 508185 |
| SR IEM G4-C | 734 - 776 MHz | Art. no. 508186 |
| SR IEM G4-D | 780 - 822 MHz | Art. no. 508187 |



evolution wireless G4

SR IEM G4 | Stereo Transmitter

SPECIFICATIONS

| RF characteristics | |
|--------------------------------------|--|
| Modulation | Wideband FM stereo (MPX pilot tone) |
| Frequency ranges | A1: 470 - 516 MHz A: 516 - 558 MHz AS: 520 - 558 MHz G: 566 - 608 MHz GB: 606 - 648 MHz B: 626 - 668 MHz C: 734 - 776 MHz D: 780 - 822 MHz E: 823 - 865 MHz |
| Transmitting frequencies | Max. 1680 frequencies, adjustable in 25 kHz steps 20 frequency banks, each with up to 16 factory-preset channels, no intermodulation 6 frequency banks with up to 16 programmable channels |
| Switching bandwidth | up to 42 MHz |
| Nominal/peak deviation | ±24 kHz / ±48 kHz |
| MPX pilot tone (frequency/deviation) | 19 kHz/±5 kHz |
| Frequency stability | ±10 ppm |
| Antenna output | BNC socket, 50 Ω |

| | |
|-------------------------|--|
| RF output power at 50 Ω | switchable: Low: typ. 10 mW Standard: typ. 30 mW High: typ. 50 mW |
|-------------------------|--|

| AF characteristics | |
|--|--|
| Compander system | Sennheiser HDX |
| AF frequency response | 25 Hz to 15 kHz |
| AF input BAL AF IN L (I) + MONO/ BAL AF IN R (II) | 2x XLR-3/¼" (6.3 mm) jack combo socket, electronically balanced |
| Max. input level | +22 dBu |
| Total harmonic distortion (THD) | <0.9 % |
| Signal-to-noise ratio (at nominal load and peak deviation) | >90 dB |
| AF output LOOP OUT BAL L (I)/ LOOP OUT BAL R (II) | ¼" (6.3 mm) stereo jack socket, balanced |

| Overall device | |
|---------------------|---------------------------|
| Temperature range | -10 °C to +55 °C |
| Power supply | 12 V DC |
| Current consumption | max. 350 mA |
| Dimensions | Approx. 202 x 212 x 43 mm |
| Weight | Approx. 980 g |

CONNECTIONS

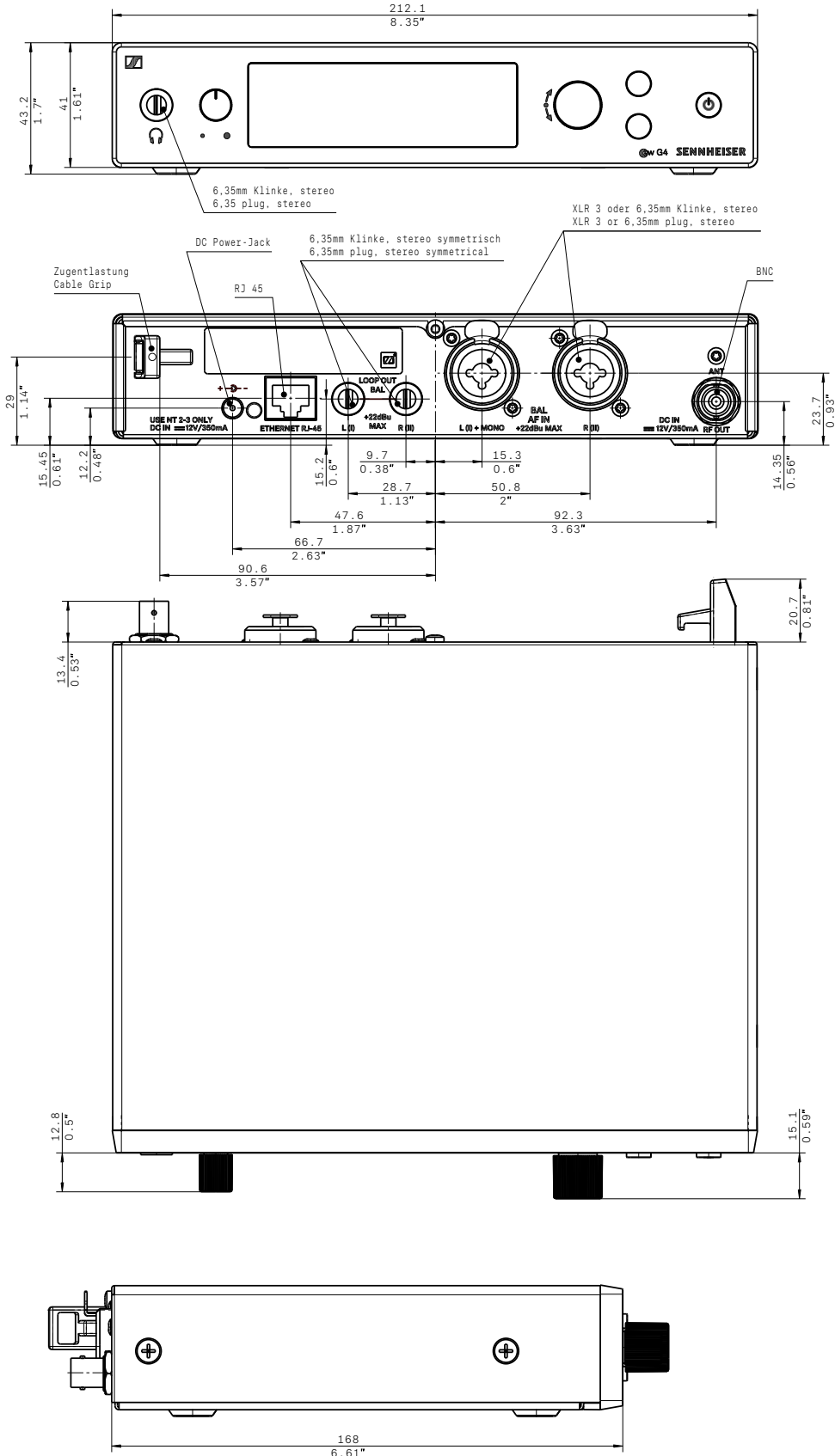




evolution wireless G4

SR IEM G4 | Stereo Transmitter

DIMENSIONS





evolution wireless G4

SR IEM G4 | Stereo Transmitter

ARCHITECT'S SPECIFICATION

The wireless stereo rack-mount transmitter shall be for use with a companion receiver as part of a wireless RF monitoring system.

The transmitter shall operate within nine UHF frequency ranges, with a switching bandwidth of up to 42 MHz: 470 – 516 MHz, 516 – 558 MHz, 520 – 558 MHz, 626 – 668 MHz, 734 – 776 MHz, 780 – 822 MHz, 823 – 865 MHz, 566 – 608 MHz, 606 – 648 MHz; transmitting frequencies shall be 1,680 per range and shall be tunable in 25 kHz steps. The transmitter shall feature 20 fixed frequency banks with up to 16 compatible frequency presets and 6 user banks with up to 16 user programmable frequencies.

The transmitter shall be menu-driven with a backlit OLED display showing the current frequency, frequency bank and channel number, metering of AF level, transmission status, transmission power, equalizer setting, input sensitivity, and lock status. An auto-lock feature shall be provided to prevent settings from being accidentally altered.

The parameters of associated receivers shall be configurable in the transmitter menu and synchronized with the receivers via an integrated infrared interface.

Frequency stability shall be ± 10 ppm. RF output power at 50 Ω shall be switchable between 10 mW (low), 30 mW (standard) and 50 mW (high).

The stereo audio input shall utilize two discrete (left/right) electronically balanced $\frac{1}{4}$ " (6.3 mm) jack/XLR-3F combo sockets; the audio output shall utilize a balanced $\frac{1}{4}$ " (6.3 mm) jack socket; an audio loop output shall be provided utilizing two balanced $\frac{1}{4}$ " (6.3 mm) jack sockets. A headphone output with headphone volume control shall be provided and shall utilize a $\frac{1}{4}$ " (6.3 mm) stereo jack socket. The transmitter shall have an Ethernet port (RJ-45) for remote network-based monitoring and control using the Sennheiser Wireless System Manager software. One 50 Ω BNC-type input socket shall be provided for connecting the antenna.

Nominal/peak deviation shall be ± 24 kHz/ ± 48 kHz. The transmitter shall incorporate the Sennheiser HDX compander system and shall include a 19-kHz MPX pilot tone with a ± 5 kHz deviation. The audio frequency response shall range from 25 – 15,000 Hz. Maximum input level shall be +22 dBu. Total harmonic distortion (THD) at 1 mV and nominal deviation shall be < 0.9 %. Signal-to-noise ratio at nominal load and peak deviation shall be > 90 dB.

The transmitter shall operate on 12 V power supplied from the NT 2-3 mains unit (for 100 – 240 V AC, 50/60 Hz). Power consumption shall be 350 mA. The transmitter shall have a rugged metal housing; dimensions shall be approximately 202 x 212 x 43 mm (7.95" x 8.35" x 1.69"). Weight shall be approximately 980 grams (2.16 lbs). Operating temperature shall range from -10 °C to $+55$ °C ($+14$ °F to $+131$ °F).

The transmitter shall be the Sennheiser SR IEM G4.